



RAJ & T MARINE SERVICES INC.

1088 M.NAVAL ST. SAN JOSE, NAVOTAS CITY, METRO MANILA

COMPANY PROFILE

Finest Craftsmanship in Ship Building



RAJ & T MARINE SERVICES INCORPORATED (FORMER R.R.T. MARINE SERVICES COMPANY) WAS ESTABLISHED IN JULY 30, 2001 UNDER THE LEADERSHIP OF MR. RICARDO R. TULIAO. THE COMPANY BEING ENVISIONED TO BE A TRAILBLAZER IN SHIP BUILDING IN NAVOTAS.

CRITICAL TO SHIP BUILDING ACTIVITIES IS THE DESIGN PROCESS AS THE LATEST ENGINEERING TECHNOLOGIES THAT MEET INTERNATIONAL STANDARDS ARE INTEGRATED IN THE VESSEL'S DESIGN.

THE CRAFTMANSHIP THAT GOES INTO EVERY VESSEL IS UNIQUE. STRICT IMPLEMENTATION OF STANDARDS, CLOSE INSPECTION AND EVALUATION. HIGHLY SKILLED WORKFORCE AND ADHERENCE TO STANDARD PROCEDURES ALL CONTRIBUTE TO A QUALITY BUILD THAT CAN BE DESCRIBED AS A WORK OF ART. ITS TRACK RECORD OF VESSEL BUILT REPRESENT RAJ&T'S CAPABILITIES AND COMPETENCE IN CREATING SEA WORTHY, HIGHLY FUNCTIONAL AND BEAUTIFUL SHIPS.



Finest Craftsmanship in Ship Building



We envision to become the leading company that provides the highest standard and sea worthy marine services.

RAJ & T Marine Services Inc. adhere to serve customer's demand with high valued quality marine services and cost efficient in a timely manner. We strive to safeguard our employees to ameliorate their performance that impacts the whole company.

SERVICES OFFERED:

SHIP BUILDING



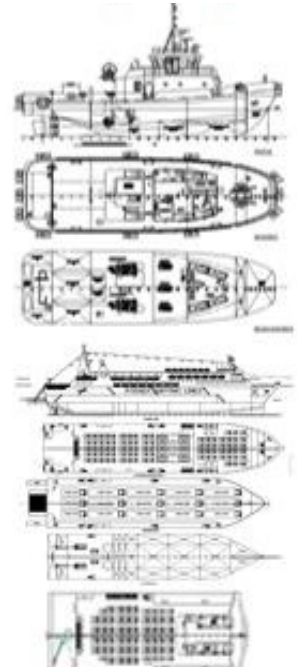
DRY DOCKING & REPAIR



SHIP CONVERSION



SHIP DESIGN



Finest Craftsmanship in Ship Building



OUR FACILITY

- Steel Fabrication & Assembly Area
- Welding Works Area
- Mold Loft Area
- Warehouse



EQUIPMENTS'

- Diesel & Electrical Winch
- 35 Tonner Crane
- 2 Tonner Dump Truck



Finest Craftsmanship in Ship Building



FACILITIES

ADMINISTRATIVE BUILDING

ENGINEERING'S OFFICE

CONFERENCE ROOM



Finest Craftsmanship in Ship Building



VESSEL'S BUILT

<u>NAME OF VESSEL</u>	<u>YEAR BUILT</u>	<u>OWNER</u>
M/T Marishal Kwatro	2001	Peninsula Gulf Marine Services Co
LCT Alpha Carrier	2003	Peninsula Gulf Marine Services Co.
LCT Prince Allen James	2006	Peninsula Gulf Marine Services Co.
LCT VNG-I	2008	SR Metals Inc.
LCT VNG-II	2008	SR Metals Inc.
LCT Sultan-II	2008	Marwan Shipping LLC
LCT Mahra	2008	Marwan Shipping LLC
C/B Lady Rasha	2009	Marwan Shipping LLC
M/T Lady Reeca	2010	Peninsula Gulf Marine Services Co.
LCT Waraya	2010	Ajman Shipping LLC
LCT Haraya	2010	Ajman Shipping LLC
LCT Cabanila	2010	Peninsula Gulf Marine Services Co.
C/S Fareeda	2011	Ajman Shipping LLC
M/T Romeo Tango	2011	Peninsula Gulf Marine Services Co.
M/T Alpha Tango	2011	Peninsula Gulf Marine Services Co.
M/V Victoria	2012	Ajman Shipping LLC
LCT Blue Diamond	2012	Seven Seas Tugs & Barges Corp.
LCT PGMSC Lima Charlie	2013	Peninsula Gulf Marine Services Co.



Finest Craftsmanship in Ship Building



VESSEL'S BUILT

<u>NAME OF VESSEL</u>	<u>YEAR BUILT</u>	<u>OWNER</u>
LCT Martin -II	2013	Maayo Shipping Inc.
M/T CID	2014	Vincent Arraste & Cargo Services
Barge Marie Cris	2014	Peninsula Gulf Marine Services Co.
Barge I.N.C. 100	2015	Peninsula Gulf Marine Services Co.
Barge Marie Cris II	2015	Peninsula Gulf Marine Services Co.
Barge I.N.C. 101	2015	Peninsula Gulf Marine Services Co.
Barge I.N.C. 102	2015	Peninsula Gulf Marine Services Co.
Barge I.N.C. 103	2016	Peninsula Gulf Marine Services Co.
LCT Rafael Matteo	2016	Peninsula Gulf Marine Services Co.
Barge I.N.C. 104	2016	Peninsula Gulf Marine Services Co.
LCT Wilcox II	2016	Maayo Shipping Inc.
Backhoe Barge	2016	Kamagong Builders
M/V Blessed Sea Journey	2017	JVS Journey Sea Transport Inc.
LCT Giok Chong II	2017	Maayo Shipping Inc.
Barge I.N.C. 105	2017	Peninsula Gulf Marine Services Co.
LCT Martin III	2018	Maayos Shipping Inc
LCT Martin V	2018	Maayo Shipping Inc
Barge Atirajia II	2018	Parsh Marine
M/Tug SARITA	2019	Peninsula Gulf Marine Services Co.
LCT Legacy 1	2019	Legacy Shipping Inc.
Bunso Ferry 2	2019	Bunso transport Service
LCT Martin 7	2020	Maayo Shipping Inc.



Finest Craftsmanship in Ship Building



BARGE PROJECT'S PREVIEW



PONTOON BARGE

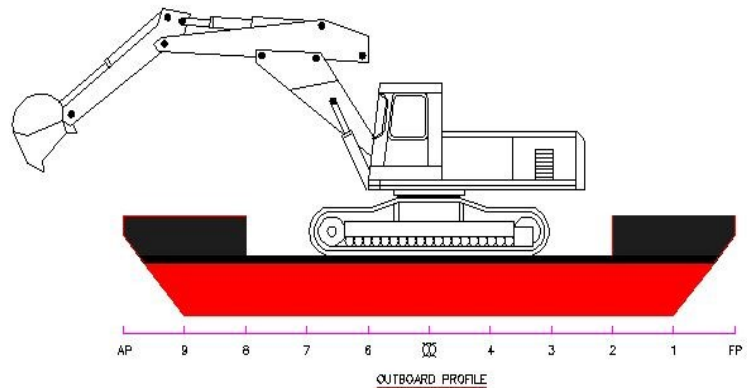
PRINCIPAL PARTICULARS:

LENGTH OVER ALL	:	24.30 m
LENGTH WATERLINE	:	23.92 m
BREADTH MOULDED	:	9.15 m
DEPTH MOULDED	:	1.83 m
Design Draft	:	1.40 m

DETACHABLE BACKHOE BARGE

PRINCIPAL PARTICULARS:

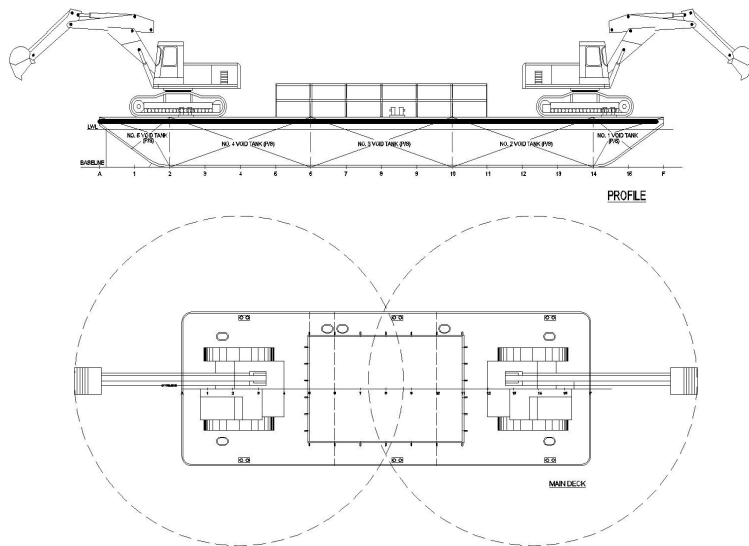
LENGTH OVER ALL	:	10.00 m
BREADTH MOULDED	:	7.00 m
DEPTH MOULDED	:	1.50 m



Finest Craftsmanship in Ship Building



BARGE PROJECT'S PREVIEW



CRANE PONTOON BARGE

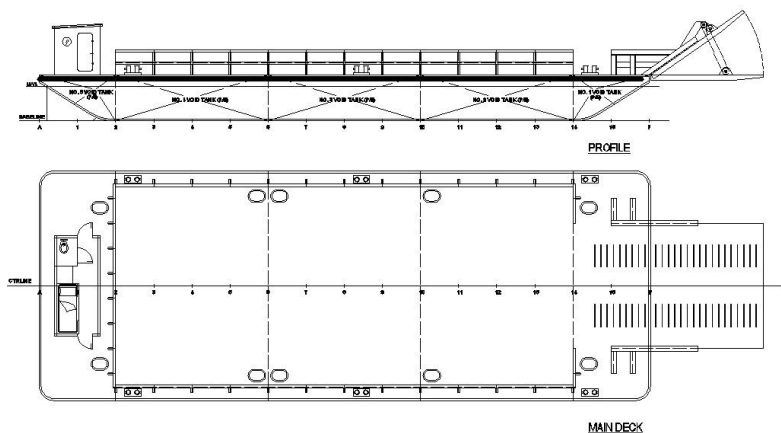
PRINCIPAL PARTICULARS:

LENGTH OVER ALL	:	24.30 m
LENGTH WATERLINE	:	23.92 m
BREADTH MOULDED	:	9.15 m
DEPTH MOULDED	:	1.83 m
Design Draft	:	1.40 m

PONTOON BARGE W/ RAMP

PRINCIPAL PARTICULARS:

LENGTH OVER ALL	:	24.30 m
LENGTH WATERLINE	:	23.92 m
BREADTH MOULDED	:	9.15 m
DEPTH MOULDED	:	1.83 m
Design Draft	:	1.40 m



Finest Craftsmanship in Ship Building



LATEST PROJECTS: NEW CONSTRUCTION

LCT MARTIN 7—MAAYO SHIPPING INC.

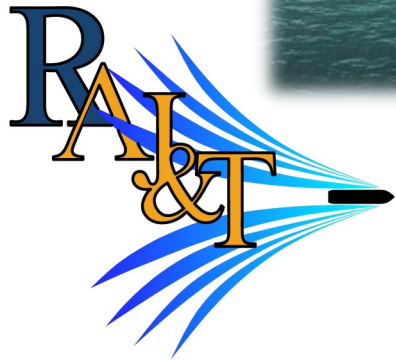


VERSION 3—DATE RELEASED: FEBRUARY 15, 2022

Finest Craftsmanship in Ship Building



NEWLY MODIFIED VESSELS



Finest Craftsmanship in Ship Building



SHIP BUILDING LIST OF CLIENTS

Maayo Shipping, Inc.

JVS Journey Sea Transport

Seven Seas Tugs & Barges, Inc.

SR Metals, Inc.

Marwan Shipping & Trading, LLC & Ajman Shipping LLC

Peninsula Gulf Marine Services, Corp.

Kamagong Builders

Legacy Shipping Inc.

Bunso Transport Service

Atienza Interisland Ferries Inc.

SHIP REPAIR LIST OF CLIENTS

Citimax Group Inc.

JVS Journey Sea Transport

Quincella Shipping

Amigo Shipping Corporation

Ocean Coast Shipping Corp.

Techmarine Logistics Inc.

Universal Robina Corporation—Flour & Pasta

JBV Shipping Line Corp.

Quincella Heir Shipping Line

Ocean Tankers Corporation



Finest Craftsmanship in Ship Building



MEMBERSHIP

Metro Shipbuilders and Ship Repairers Association Inc.

2015 - Member

2015 to 2017 - President

2017 to present - Chairman

SHIPYARD ASSOCIATION OF THE PHILIPPINES

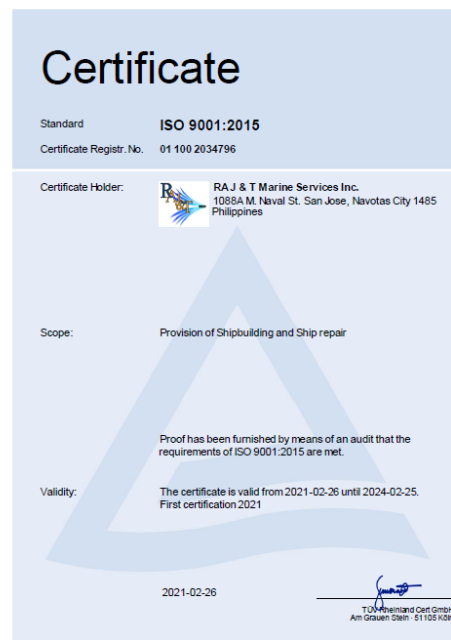
2018-2021 - Committee Member

MARINA REGISTRATION



ISO 9001:2015

CERTIFICATE



www.tuv.com



VERSION 3—DATE RELEASED: FEBRUARY 15, 2022